

INSTRUMENT APPROACH CHART - ICAO
AD ELEV 49 FT
 HEIGHTS RELATED TO THR RWY 08L ELEV 25 FT

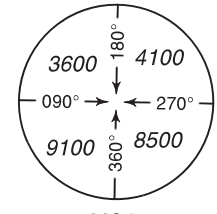
ATIS	126.800
TWR	118.825
APP/RAD	121.200
GND	121.800

MUSCAT/Muscat Intl OMAN
VOR RWY 08L

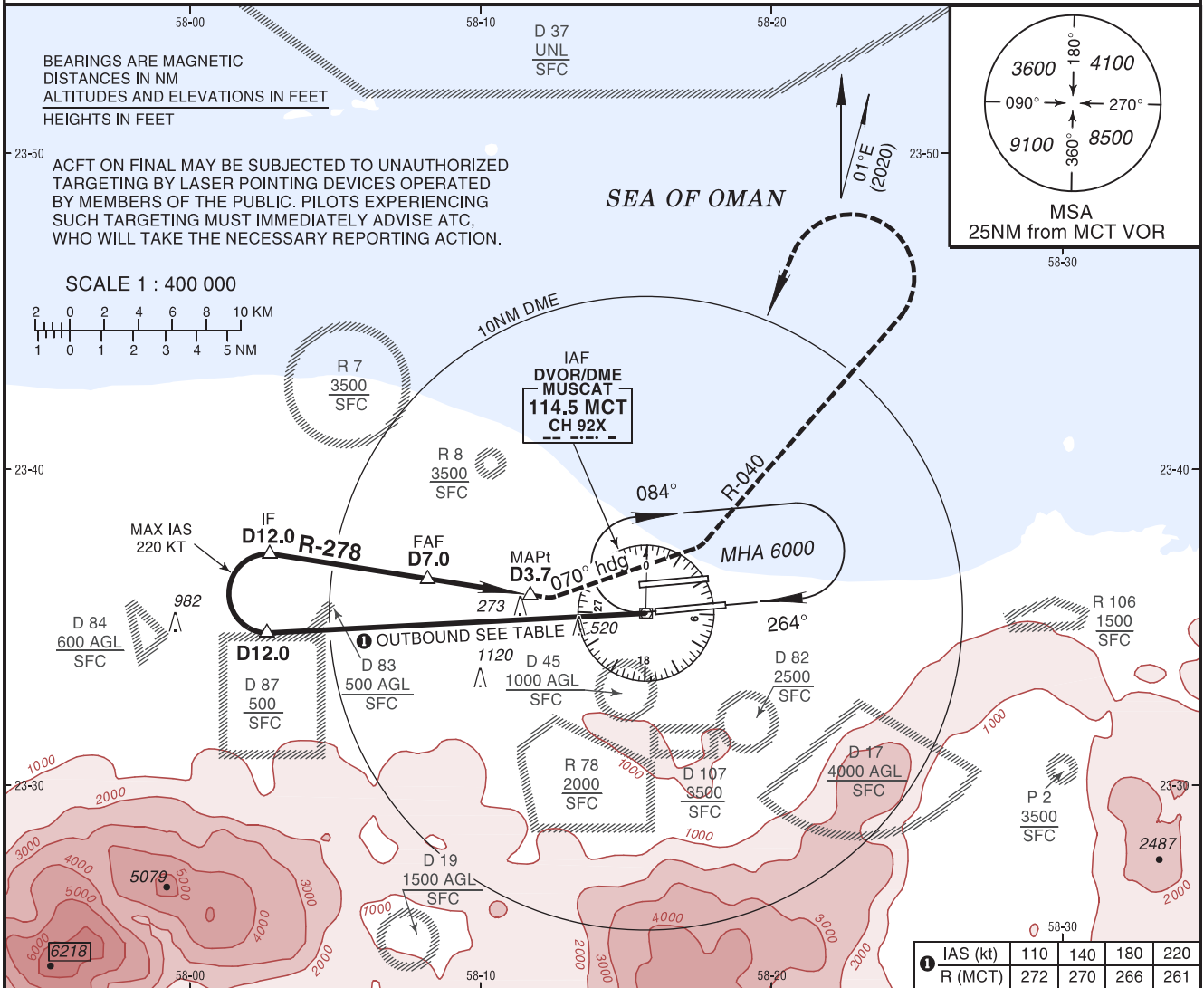
BEARINGS ARE MAGNETIC
 DISTANCES IN NM
 ALTITUDES AND ELEVATIONS IN FEET
 HEIGHTS IN FEET

ACFT ON FINAL MAY BE SUBJECT TO UNAUTHORIZED TARGETING BY LASER POINTING DEVICES OPERATED BY MEMBERS OF THE PUBLIC. PILOTS EXPERIENCING SUCH TARGETING MUST IMMEDIATELY ADVISE ATC, WHO WILL TAKE THE NECESSARY REPORTING ACTION.

SCALE 1 : 400 000

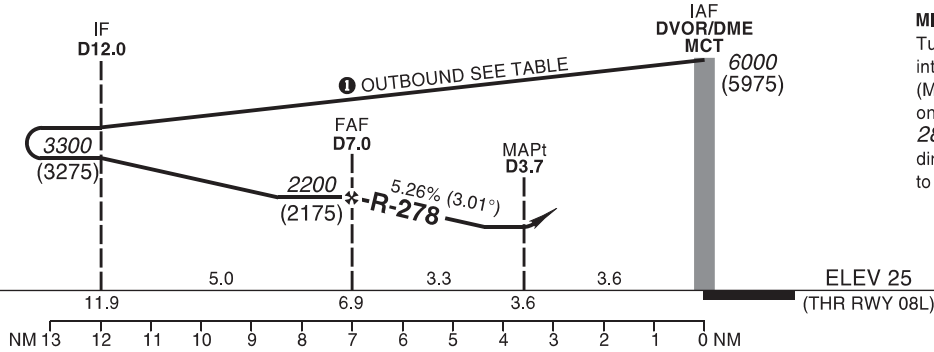


MSA
25NM from MCT VOR



IAS (kt)	110	140	180	220
R (MCT)	272	270	266	261

TA 13000



MISSED APPROACH:
 Turn LEFT heading 070° to intercept and follow R-040 (MAX IAS 210 KT). Proceed on R-040 until reaching 2800. Turn LEFT (MAX IAS 220 KT) direct to VOR, climb to 6000 to join the holding.

STRAIGHT-IN APPROACH		A	B	C	D	ADVISORY INFORMATION ONLY							
VOR	OCH	1140				MCT DME	6	5	4				
	MDA(H)	1160 (1140)				ALT	1940	1620	1300				
	VIS	1500m		4600m		(HGT)	(1920)	(1600)	(1280)				
						GS	kt	80	100	120	140	160	180
CIRCLING (HAA)*		A	B	C	D	FAF-MAPt	min:s						
						ROD: 5.26%	ft/min	426	533	639	746	853	959

- ② Turns before MAPt are prohibited.
 - ③ Circling not authorized.
 - ④ Timing not authorized for defining the MAPt.
- DME or RADAR required.
 Final Approach track move 14° from RCL.